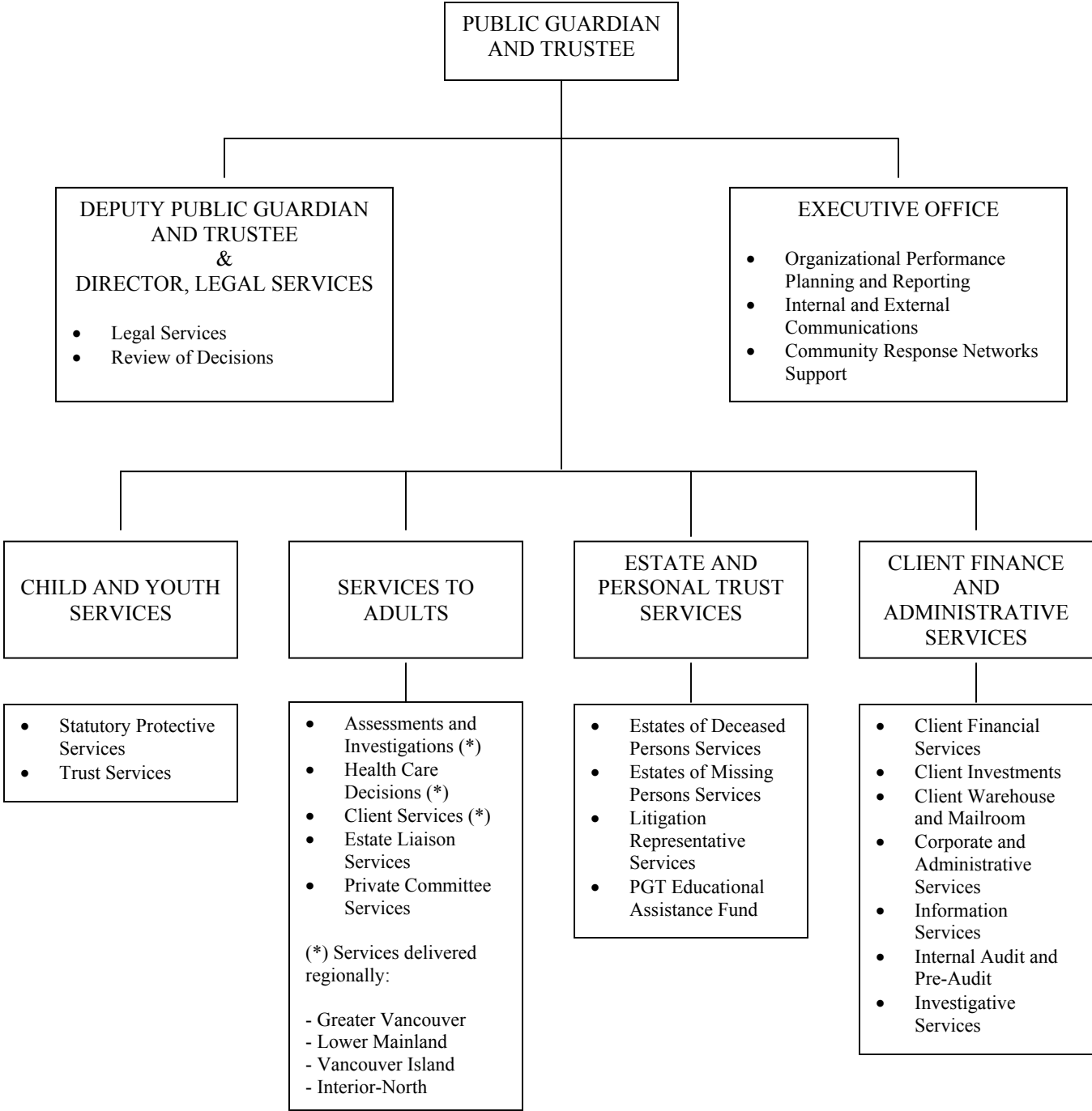


# ORGANIZATIONAL CHART



PUBLIC GUARDIAN  
AND TRUSTEE

DEPUTY PUBLIC GUARDIAN  
AND TRUSTEE  
&  
DIRECTOR, LEGAL SERVICES

- Legal Services
- Review of Decisions

EXECUTIVE OFFICE

- Organizational Performance Planning and Reporting
- Internal and External Communications
- Community Response Networks Support

CHILD AND YOUTH  
SERVICES

- Statutory Protective Services
- Trust Services

SERVICES TO  
ADULTS

- Assessments and Investigations (\*)
- Health Care Decisions (\*)
- Client Services (\*)
- Estate Liaison Services
- Private Committee Services

(\*) Services delivered regionally:

- Greater Vancouver
- Lower Mainland
- Vancouver Island
- Interior-North

ESTATE AND  
PERSONAL TRUST  
SERVICES

- Estates of Deceased Persons Services
- Estates of Missing Persons Services
- Litigation Representative Services
- PGT Educational Assistance Fund

CLIENT FINANCE  
AND  
ADMINISTRATIVE  
SERVICES

- Client Financial Services
- Client Investments
- Client Warehouse and Mailroom
- Corporate and Administrative Services
- Information Services
- Internal Audit and Pre-Audit
- Investigative Services